

# AGRICULTURE NEWS



## IN THIS ISSUE

- Year 8 Agriculture Excursion
- Interview with Yamstick Cattle Club
- Year 10 excursion - Buffalo Farm visit
- Fundraiser night
- Ryag - Sheep course
- Babies, babies everywhere!

## YEAR 8 EXCURSION

On Monday the 12th March Year 8 Agriculture who have been studying poultry for their Design and Technology project visited Yamstick Organic Farm at Missabotti.

Yamstick is a free range organic chicken egg farm that currently houses 3000 chickens for egg production. We were taken on a tour of the property and shown the chicken tractors that provide food, shelter and water to the chickens. The chickens are housed inside electric fencing with a Maremma livestock dog. The dogs play an important role in protecting the chickens from foxes, eagles and other natural predators.

We got to meet over 500 chickens and learn how the eggs are collected, graded, checked, weighed and packaged for sale.

Students have discussed, that they believe free range eggs are a better option than caged or barn raised and it was great to see such happy and healthy hens on our visit.

Thank you to Yamstick for showing us around your beautiful property and introducing us to your hens.

Yamstick eggs are available locally or for more information <http://www.yamstick.com.au>

Read our interview with Yamstick



Healthy Happy Chickens





# YAMSTICK INTERVIEW ... Continued

## **What pasture improvement methods do you use to ensure the chickens have access to fresh pasture? i.e planting of pastures or paddock rotation**

Paddock rotation is the most important method of pasture management. Also slashing undesirable species where possible before they go to seed.

## **What biosecurity measures are put in place to ensure the health of the chickens?**

Nipple water lines and skid feeders help protect from disease by native/wild birds. Limiting the amount of access visitors have to the flocks. Ensuring visitors are biosecure. I.e, have not come from another property that keeps pigs or poultry, and using disinfection for shoes and hands. Most importantly being informed of and observing flock Health and behaviour so that an issue is noticed and can be isolated before it spreads.

## **How many people work at Yamstick?**

6 people work at Yamstick, hopefully more soon!

## **How many eggs are being collected daily?**

Av 1600 eggs daily, as of last week. From 1850 hens. Av 1300 of these are graded as saleable per day.

## **What measures does Yamstick have in place to protect the chickens from prey?**

We use electric mesh fencing and Maremma LSGD (livestock guardian dogs) to protect the ladies from predators. Also Being critical of range placement and shed placement within the range to discourage attacks.

## **Does Yamstick debeak their chickens?**

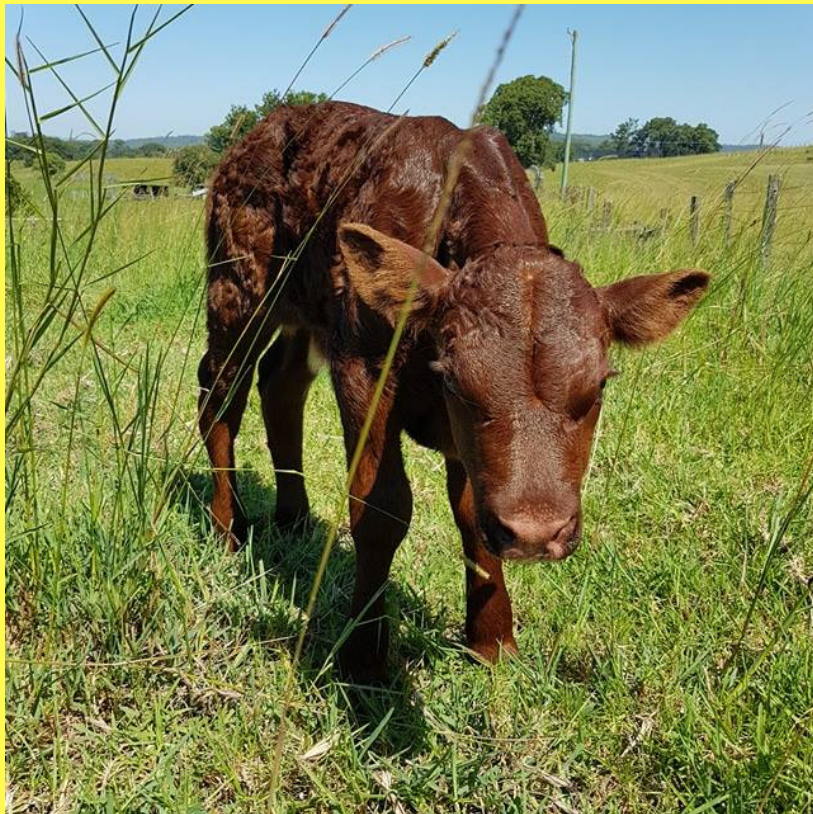
We don't debeak. It's against our organic certification. I could go into this much much further ;)

## **What happens to the hens after they have finished their peak laying period?**

After the Hens have finished they lay cycle they are humanely killed. It sucks. One of the benefits of our farming system is that hens stay productive for longer without too much financial output. We have a much longer lay cycle than most other commercial egg outfits. However we do see it as a huge waste of life, and it's something we are always Conscious of and working on. (Such a political answer haha!!)







Congratulations Lacey Grey

It's a **BOY!**

Congratulations Lacey Grey on the birth of Puddles.

Puddles was born on his due date 19/3/2018 and named by Year 11 student Chyenne Cameron

Puddles is the first Red Poll Calf to be born at Bowraville Central School.

Puddles will have his first public appearance, at the Macksville Show Saturday 14th April.

---

## BCS Agriculture Cattle Club

---

### Contact

Lori Wilson

Email: [Lori.wilson2@det.nsw.edu.au](mailto:Lori.wilson2@det.nsw.edu.au)


Ph: 0413 918 510

Bowraville Central School

Ph: 65 647 162


### About

Thursday afternoons after school 3.45 - 5.30



Cattle are housed at the school farm. Cattle Club members are involved with the day to day care and feeding of the cattle and work with them after school. Cattle Club students are also invited to attend the annual Red Poll training camp in Uralla where they gain experience in the practical handling of cattle stock.

### Skills



Cattle breaking in  
Show Prep  
Animal handling skills  
Teamwork

Students are trained in all aspects of cattle showing including breaking in cattle, halter training and leading and presenting cattle for judging. Students learn what the judges are looking for when judging cattle

# CATTLE CLUB - EVERY THURSDAY AFTER SCHOOL



# EUNGAI BUFFALO FARM

## YEAR 9/10 AGRICULTURE EXCURSION

On Thursday the 22nd March we visited the Eungai Buffalo Farm as part of our "paddock to plate unit". Students are exploring local Agribusinesses and learning about the processes involved in creating a product line from an enterprise. This is particularly interesting, because Year 9/10 Agriculture are planning on hosting a "paddock to plate" event at the School farm in early November.

Ian Massington (the owner) and his team gave a fascinating informative talk on how their dairy operates. The students got to sample some fetta cheese and salami as well as an array of woodfire-pizzas. Students then walked through the dairy and got an up close an personal meeting with two friendly buffalos.





# AGRICULTURE

Year 9 & 10  
Ms Wilson



## WELCOME YR 9&10

This year you will each form small groups (2-4 students) and choose an agricultural enterprise.

Your enterprise may be animal or plant based.

## EXPLORE

You will explore how to develop your enterprise into a profitable business.

You will get the opportunity to visit local businesses that are achieving success with their agricultural enterprises.



## ENTERPRISE & PRODUCT IDEAS

- \*Pigs
- \*Herbs
- \*Sheep
- \*Poultry
- \*Vegetable production
- \*Bush Tucker
- \*Pork sausages
- \*Fresh Flowers
- \*Seedlings
- \*Garlic infused cooking oils
- \*Seedlings
- \*Jams/Preserves

## SHOWCASE EVENT

In term four you will have the opportunity to host a paddock to plate event at the school farm.

Each enterprise will be responsible for contributing to the table.

50 guests will be invited and you will be responsible for organising, preparing and cooking a three course meal.

You will also name the event and be responsible for marketing & advertising.



## EXPERIENCE AN AG FUTURE

This year you will get the opportunity to visit Eungai Buffalo Farm, UNE at Armidale and Yamstick Organic Chicken Farm and explore agriculture as a career

2018 Ms Wilson



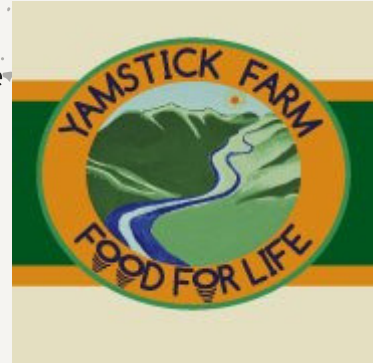


# INTERVIEW WITH YAMSTICK ORGANIC FARM

Located at Missabotti, Bowraville NSW 2449

## Where does the name Yamstick come from?

The farm is named for the walking stick or 'Yamstick' palm that grows endemically in the Gladstone or Ganay state forest. This forest surrounds the farm on three sides and is a huge part of the biosecurity, ecology and beauty of the farm. It's said that Ganay is a Gumbaingirr word for the digging stick or Yamstick, used to unearth the tuberous roots of the palm for bush food.



## What products does Yamstick farm produce?

Eggs and Pecans. Possibly Maremma Dogs in the future ;)

## How do you ensure your eggs are Organic?

Certified organic everything! Organic Feed, and Organically managed pasture. No pesticide/herbicide use. Organic pasture seed. Water comes from on property, rain water or water collected from the dams. We also avoid any GM nutrition.

## Where does Yamstick sell their products?

Locally to bakeries restaurants cafes food trucks supermarkets.

An organics wholesaler in Sydney

Charities and local sports teams take donated excess.



## Do you buy in your chickens or breed on the property?

Raise from day olds, to have control over the sensitive raising period. It's also an organic requirement that chicks have been raised organically.

## How many chickens are on the property?

We have approximately 2850 hens in total. 1000 of these are immature and just coming into lay.

## Are the chicken tractors moved daily?

Chicken tractors are moved every two days or as pasture determines.

We always move the tractors before feeding as this reduces the oral faecal cycle.



[www.yamstick.com](http://www.yamstick.com)



Food & Drinks  
Available



Raffle &  
100 club

\$10 per person

Prizes Galore  
ALL Welcome

Prizes for BEST  
DRESSED

**BOWRAVILLE CENTRAL SCHOOL CATTLE CLUB  
PRESENTS**

# **COWBOY BINGO**

Raising money to support the school cattle club

**THURSDAY MAY 24TH/6PM  
BOWRAVILLE CENTRAL SCHOOL HALL**

Date to be confirmed - Follow our School Facebook page for more  
information



# BOWRAVILLE CENTRAL SCHOOL

## ABOUT



Bowraville Central School is a Kinder to Year 12 campus within the Nambucca Valley, Mid-North Coast, New South Wales. Our dedicated staff work with community to create a safe, supportive and challenging learning environment for all students.

The school is an important focal point within the community and is widely recognised for its range of innovative programs and academic achievements.



### RYAG - 2018 Walcha Sheep Camp.

It is part of a Rotary International program, Rotary Youth in Agriculture (RYAG), and Walcha is home to the sheep camp. During the camp, they attended the New England Fibre Testing Laboratory in Walcha, the Nerstane property at Woolbrook and Ashfield property at Walcha. Sleeping in the shearers cottages and then a Gala Dinner to finish the program. It is an inspirational program and we thank Rotary for providing this opportunity for our students.

*Congratulations*

### Special Thanks

Nambucca Shire Council - For the generous donation of soil to fill our newly built raised garden beds.



### Special Thanks

Sable Engineering & Metaland Pty Ltd for the kind donation of metal for our new chicken coop.

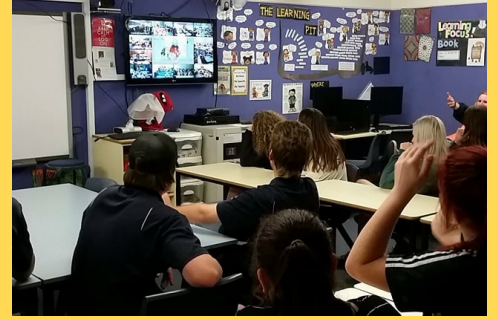




# Biosecurity Online Excursion

Tuesday 27th March

Primary Industries students were joined by the Year 9 and 10 Ag class for a live video excursion discussing Australia's Biosecurity hosted by the flamboyant Costa Georgiadis from the ABC's Gardening Australia.



Students used the connected classroom to participate in the online excursion

Students were able to participate in a live Q&A with Costa himself as he discussed what's happening today in Australian Biosecurity and how we are working to keep our vast coastline and borders protected from invasive pests and diseases.

With easy access into Australia via travel, imports and even online shopping, he talked about current biosecurity pest and disease incursions effecting Australia and also the threats for which Australia must be prepared for.

Costa also interviewed some of the people working in Biosecurity who are protecting New South Wales \$15 billion dollar primary industry sector, highlighting the important and varied range of careers and career pathways in Biosecurity.



Costa hosted the online excursion

## Primary Industries

Primary Industries Students have been busy this term. Primary Industries is a VET subject. Students doing Primary Industries in Year 11 and 12 will gain national qualifications.



# GARLIC TIME

Year 11 Work studies have just planted a crop of garlic that will be ready to harvest in November. Mr Mason, Career's Teacher is working along side student's as they explore a range of agribusiness enterprises.



Welcome  
Evie

Evie was born  
at the farm  
and is the  
daughter to  
Daisy

## WANTED - FARM/GARDEN MATERIALS

Bowraville Central School Ag farm is looking to improve the overall feel/look and productivity of the farm. We are seeking donations of the following items.

Bathtubs

Galvanised watertanks that could be cut down - must have minimal rust and holes

Timber sleepers

Timber fence palings

Old wheelbarrows & watering cans - to be used as garden features

Long handled shovels

Plants/fruit trees - anything eatable ,rosemary,lavender and chilli plants

Other garden items that you believe may be of use - tools,black plastic, ect

Gumboots and workboots

Drizabones

3 x old swing sets

If you believe you can help, please feel free to email me on [lori.wilson2@det.nsw.edu.au](mailto:lori.wilson2@det.nsw.edu.au) or send a sms to 0413918510

